

New Product

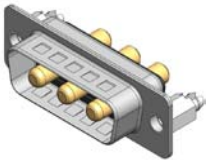
CoolPower® D-sub

Amphenol

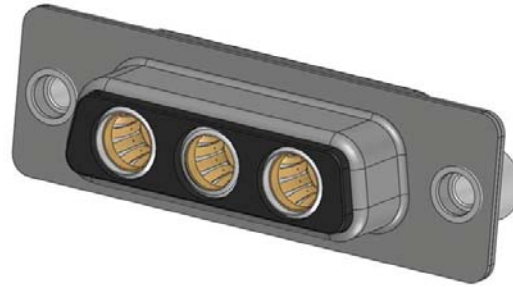
Now you're connected!

About Amphenol Commercial Products

Amphenol's commercial connector products are used in a variety of end user applications including networking, telecom, server & computer, storage & HDD, consumer electronics and entertainment, professional audio & industrial.



LCC17 SERIES



Description

Amphenol CoolPower® D-sub connectors offer the familiar shape and functionality of a combination D-subminiature connector with high current, high performance Amphenol CoolBand contact technology.

LCC17 series connectors utilize the same front shells, rear shells and mounting features found on standard D-sub connectors, which means they are fully interchangeable on a PCB, panel or cable assembly. This allows users to upgrade to a higher performance solution without a costly re-design.

Initially, 3W3 arrangements in both male and female orientations are available. Additional contact arrangements are planned, including combination power and signal versions. Various termination, plating and mounting options are available.

Applications

LCC17 is intended for use in higher amperage power supply and distribution applications where the current handling capabilities of typical combo D-sub connectors is insufficient.

- Networking, Telecom and Wireless
- Power Supply and Amplifier
- Industrial and Medical
- Military/ Aerospace

Amphenol

Now you're connected!

Related Products

Amphenol manufactures an expanding line of CoolPower® connectors, as well as standard filtered and unfiltered combo D-subminiature connectors to meet all of your power needs. Contact your local Amphenol representative for details



FCC22 Socket



FCC22 Combo



Slim Drawer

Electrical and Environmental Properties

- Current Rating
 - Power Contacts: 55 Amperes (per contact)
 - Signal Contacts*: 5 Amperes (per contact)
- Contact Resistance:
 - Power Contacts: 0.25 milliohms max
 - Signal Contacts*: 20 milliohms max
- Insulation Resistance: 5000 Megohms
- DWV: 1500V DC
- Operating Temperature: -55°C to +105°C
- UL, CSA, TÜV approvals pending

Mechanical Properties

LCC17 housings are designed for high temperature solder processes. Available termination styles include right angle or vertical mount PCB solder tail, solder cup and crimp. Other termination styles may be available (consult factory). A variety of standard mounting options are available.

- All materials are RoHS compliant, per EU Directive 2002/95/EC and amendments
- Housing: High Temperature Resistant Nylon, UL 94V-0, Black
- Contacts (typical)
 - Power: Copper Alloy, gold over 50µ" nickel
 - Signal*: Phosphor Bronze, gold over 50µ" nickel on mating area
- Mounting Hardware: Nickel Plated Steel or Brass

Available Documents

P-LCC17-A3W3PA-4N1-REVA
P-LCC17-A3W3PE-AN1-REVA
P-LCC17-A3W3SF-2N1-REVA
P-LCC17-A3W3SF-4N1-REVA
(family drawings coming soon)

Part Numbers

LCC17-A3W3PX-XXN
LCC17-A3W3SX-XXN

* First available LCC17 part numbers are 3W3 arrangements without signal contacts

Amphenol

Amphenol Canada Corp.
605 Milner Ave.
Toronto, Ontario, M1B 5X6
416.291.4401

Copyright © Amphenol Corporation 2011 • All rights reserved

www.amphenolacp.com